

CERTIFICATE OF LOCATION OF GOVERNMENT CORNER

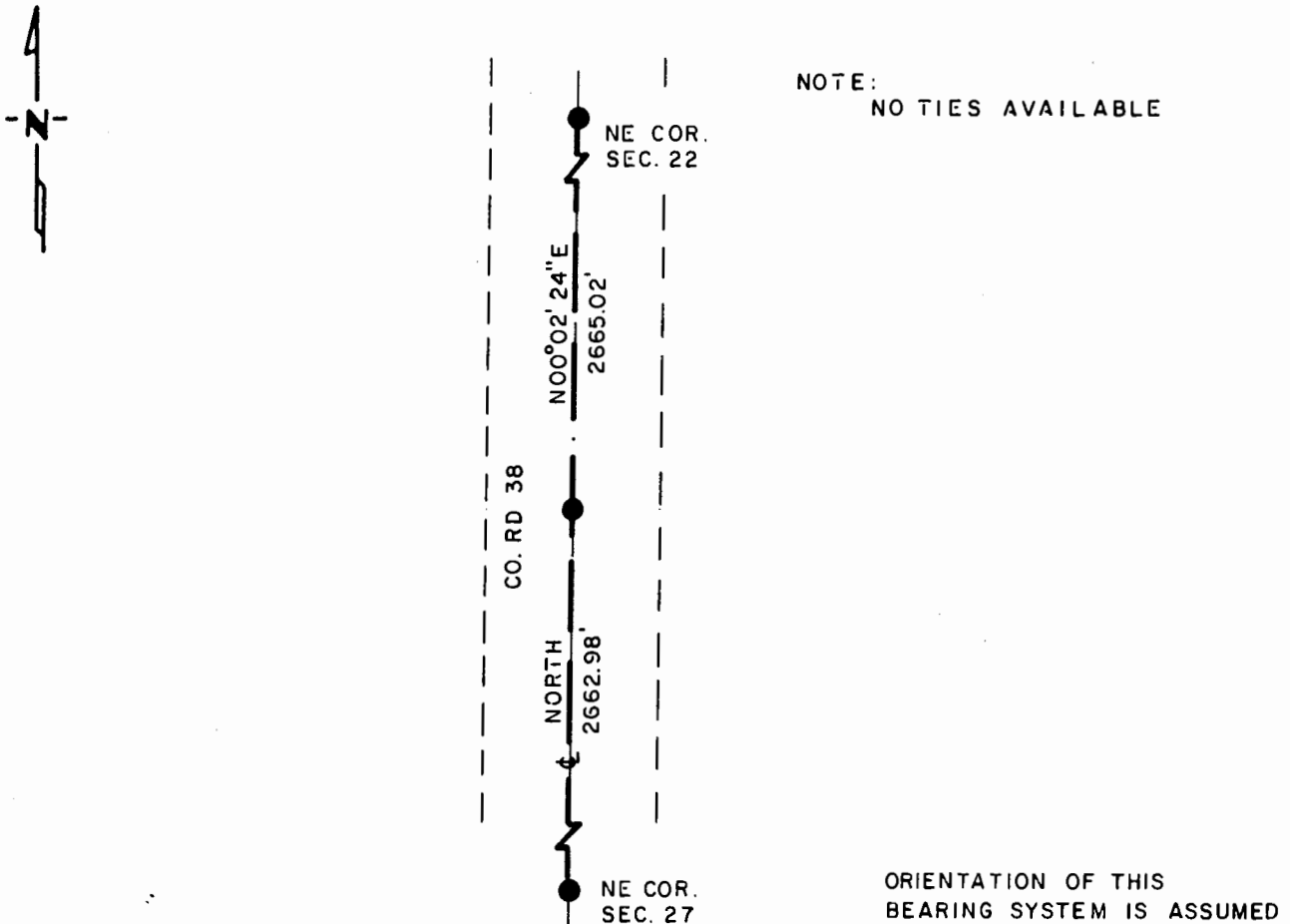
EAST QUARTER Corner of Section 22, Township 108 N., Range 40 W., 5th P.M.

STATE OF MINNESOTA, County of MURRAY

At the corner location shown on the sketch:

- On 10-23-84 found a 6"x6"x18" CONCRETE MONUMENT, DOWN 24"
DATE
- left monument as found, lowered monument, removed monument (explain)
- On 10-23-84 placed a 1 1/4"x 1 1/4" x 20" PERFORATED STEEL TUBE WITH
DATE
ALUMINUM CAP STAMPED "D.N.R. SURVEY MARKER", OVER CONC. MON. FLUSH

SKETCH OF REFERENCE TIES



Statement of evidence relative to this corner location is on back of page.

J. B. M. 7-19-85
G-361

I hereby certify that this document and the data contained herein was prepared by me or under my direct supervision.

Lowell R. Pomeroy 7-22-85
SIGNATURE DATE

Registration No. 170051

- Land Surveyor, Professional Engineer
- County Surveyor, County Engineer

OFFICE OF THE COUNTY RECORDER **172142**
County of Murray

I hereby certify that this document was filed in the Co. Recorders office at 10 .M. on the 30th day of July A.D., 1985

County Recorder Henry J. Ohm

By _____, Deputy

DOCUMENT NO. 172142

East Quarter Corner Section 22, Township 108 North, Range 40 West

This corner was originally established by the U. S. General Land Office in 1861. The government notes show the corner is in a marsh with a witness corner set 350 links South and marked with a wood post set in a mound.

In October 1984, the DNR Bureau of Engineering contacted the Murray County Offices of the Recorder and Highway Engineer for corner information.

The following information was obtained from the County Highway Engineer's Office:

A page in a Surveyor's Record Book, shows Section 23 and lists the following about this corner:

- 1) 1936 - concrete stone with hubs set 50 feet east and 50.0 feet southeast
- 2) concrete stone, date not indicated, with these ties:
RP tack in telephone pole, east, 32.1 feet
RP tack in light pole, southwest, 35.7 feet

The County Engineer's government corner tie book shows that on July 7, 1971, a field stone was found at this corner, and a steel pin was placed over the stone.

Also shows a pin found on September 5, 1980, with no ties taken.

The following information was obtained from the County Recorder's Office:

A certificate of location of a government corner, dated September 5, 1980, signed by Gary Martin, RLS#12967, shows this corner as an iron pin above stone per county records. No ties were taken but these distances are shown from this corner:

2664.98 feet to the northeast corner of Section 22
5332.22 feet to the east quarter corner of Section 23.

In October 1984, the DNR Bureau of Engineering traversed to the area of the corner and found a 1/2 inch by 12 inch rebar over a 6 inch by 6 inch by 8 inch concrete monument which was down 24 inches. Probed down to 44 inches and encountered another solid object believed to be a stone. Concrete monument was found to be in the center line of an east-west road and:

2665.02 feet from the northeast corner of Section 22
2662.98 feet from the southeast corner of Section 22.

Accept the concrete monument as the location of the corner.

Traverse information is available from the DNR Bureau of Engineering.

rec20/missu2